



FORESTRY PRODUCTS



THE STEPA ADVANTAGE

STEINDL-PALFINGER

STEINDL-PALFINGER has for decades been developing cranes with excellent technical characteristics.
Manoeuvrability - Lifting power - Reliability

KTL priming and powder-coating for the toughest of jobs and long-lasting colour

Slew mechanism and crane column from PALFINGER-EPSILON for long life and great reliability

CE-compliant safety features with fully-fledged EMERGENCY STOP button

Patented drawbar with internal cast-iron pump, drive shaft and hose guide

Central support leg with 2 speeds as standard

Flap-down stabilisation
Great stability and large contact area

Double & triple telescope system for high telescope speeds

internal hose run all the way to the top of the grab

Logging winch optionally with 40m rope length

The **semi-closed front grille** protects the components and hoses behind it

PALFINGER-EPSILON universal joint for maximum protection and minimum wear

Heavy-duty timber grab with great closing force and high-quality construction and geometry

No exposed hoses from the front grille to the axles everything is laid in protected fashion.

professional stakes optional as standard from M series

Pull-out frame incl. LED lights

Available with **tyres** 400-600mm wide and with forestry wheel rims

PRODUCT NAME:

F L 62 85
 F - forestry crane
 L - crane (long boom crane)
 Z - crane (foldable crane)

Range [dm]
 Lifting moment [kNm]

C 12 V
 C - permissible gross weight [t]
 V - adjustable axle

Forestry trailer series
 B Series: small and inexpensive - 8 & 9 & 10 to
 C Series: compact and strong - 10 & 12 to
 M Series: The all-rounder - 14 & 16 to

FORESTRY TRAILER

B-SERIES 8, 9 & 10 TONNES

Now also available
as B10



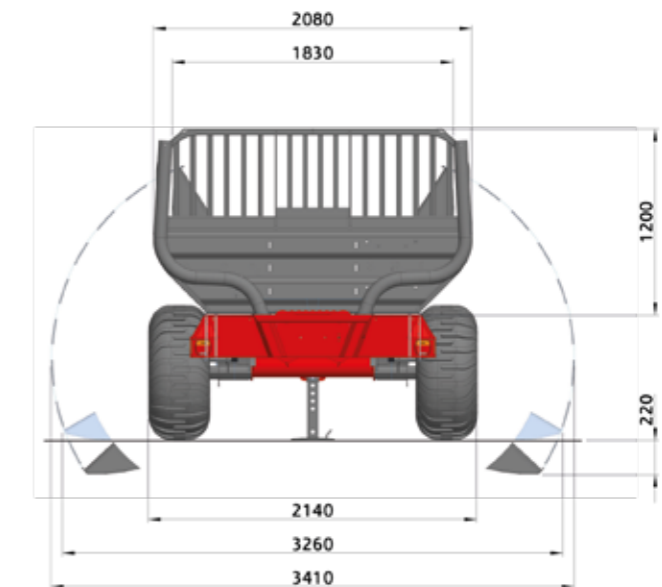
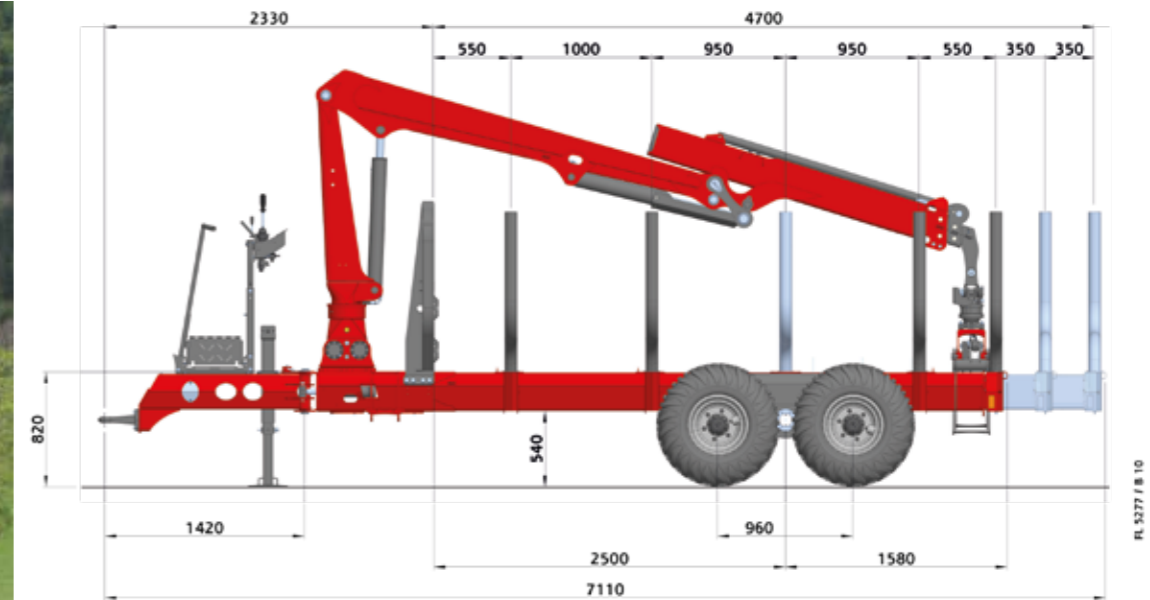
FL4277 on B8

The new B Series

Now with greater load capacity.

- **Now NEW** with bigger axle distance of 2.5m
- up to 13t permitted total weight at 10 km/h on non public roads
- hexagonal base frame profile from the articulated drawbar to the rear end
- low dead weight for small tractors
- articulated drawbar with +/-40° slewing range
- B8 and B9 - with 350mm frame extension
- B10 - with 700mm frame extension for greater load capacity

robust, rolled
circular tube stakes



B Series Technical Data		B8	B9	B10
tyre size		400/60-15.5"		
permitted total weight at 10 km/h on non-public roads	[to]	11	12	13
permitted total weight at 25 m/h implementation	[to]	9	10	11
load space	[m ²]	1.9		
slew angle of the swing axle	[°]	+/- 12		
unladen weight with standard tyres*	[kg]	1750	1800	1850
suitable for following forestry crane models		FL 42 - 52		

* additional weight: 4TB-opt. tyres: 100 kg
DLB: 50 kg • own oil supply: 150 kg

FORESTRY TRAILER

C-SERIES 10 & 12 TONNES



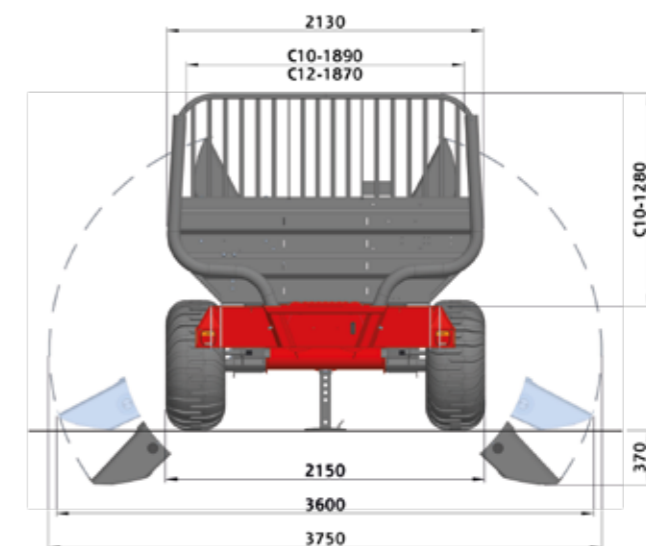
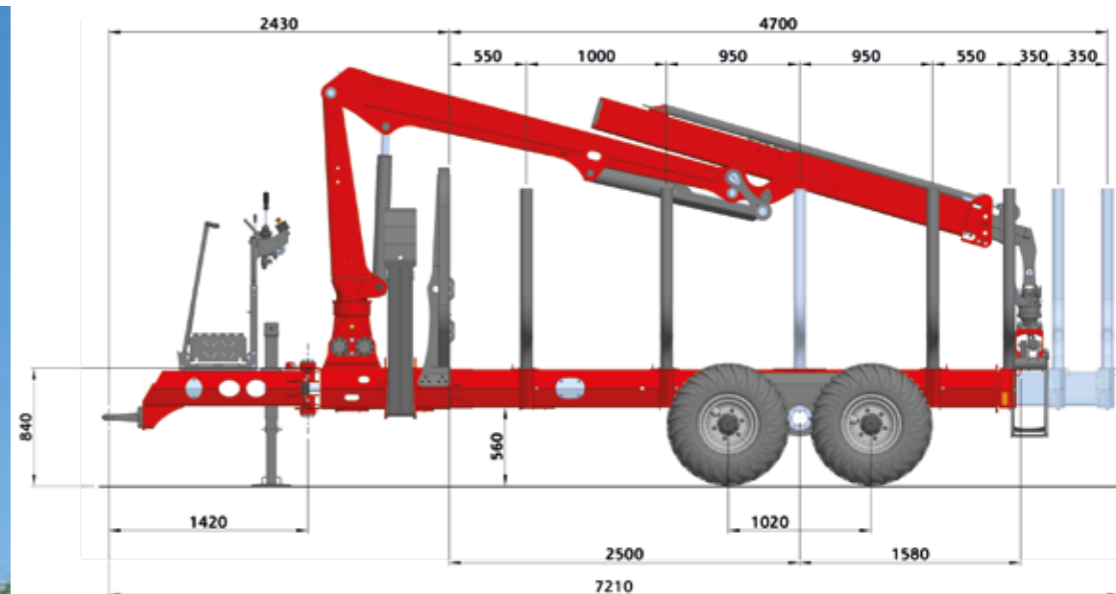
FZ6290 on C12

The proven medium-sized one

Solid yet not heavy, but for cranes that already have 6.2 mto lifting torque.

- up to 15to permitted total weight at 10km/h on non public roads
- for L-cranes with up to 11.0m and Z-cranes with up to 9.0m reach
- hexagonal base frame profile from the articulated drawbar to the rear end
- mechanical extension +700mm as standard
- protected flap down support
- with hydraulic and/or air brake
- articulated drawbar with +/-40° slewing range

type approval for road use
at up to 25 km/h



	Tyre sizes	Drive force at 250 bar	Drive speed at 2x40l/min
2RT-104	400/60Q-15.5	1.5 to	7.7 km/h
	480/45Q-17.0	1.5 to	7.9 km/h
	500/50Q-17.0	1.5 to	8.0 km/h
2RTS-120	500/50Q-17.0	2.9 to	4.0 km/h

C Series Technical Data		C 10	C 12
tyre size		400/60-15.5*	
permitted total weight at 10 km/h on non-public roads	[tonnes]	13	15
permitted total weight at 25 km/h implementation	[tonnes]	11	13
permitted total weight at 40 km/h implementation	[tonnes]	10	12
load space	[m²]	2.1	2.4
slew angle of the swing axle	[°]	+/- 12	
unladen weight with standard tyres*	[kg]	2150	2250
suitable for the following forestry crane models		FL & FZ 42 - 62	

* additional weight: 4TB-2RT-104: 100 kg • 4TB opt. tyres: 150 kg
DLB: 50 kg • own oil supply: 150 kg

FORESTRY TRAILER

M-SERIES 14 & 16 TONNES



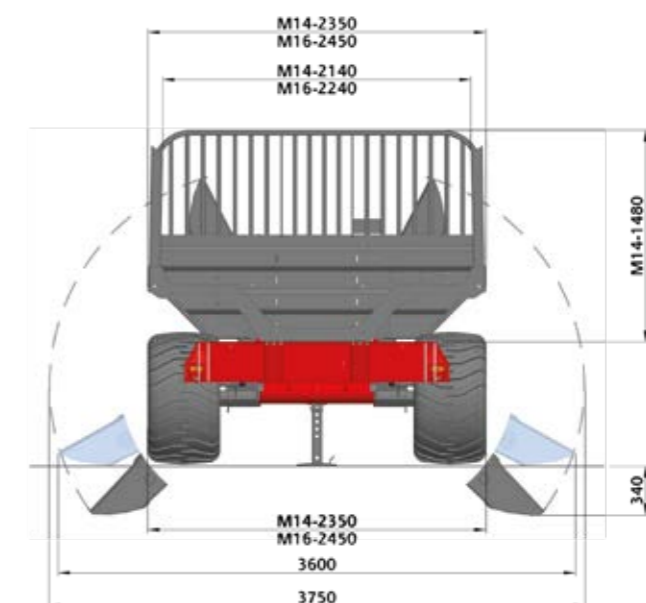
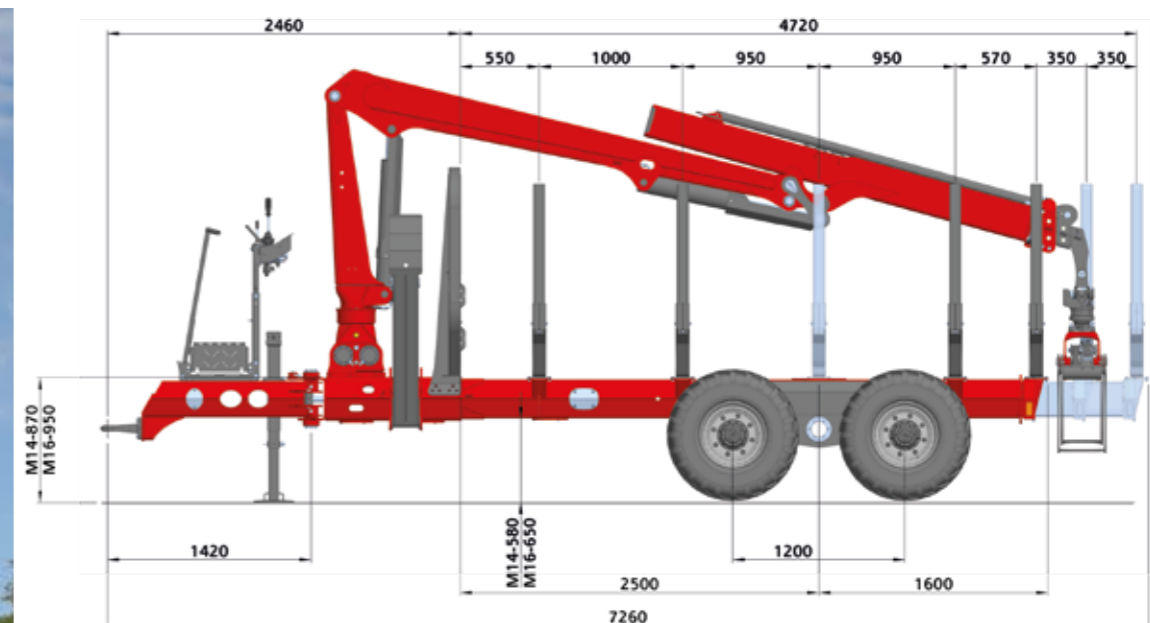
FL8211 on M16

The big one for the most powerful cranes

For STEPA's biggest cranes.

- up to 19t permitted total weight at 10km/h on non public roads
- hexagonal base frame profile from the articulated drawbar to the rear end
- mechanical extension +700mm as standard
- optionally available with branch skip or round bale attachment
- with hydraulic and/or air brake
- articulated drawbar with +/-40° slewing range

joystick control
from the top seat



	Tyre sizes	Drive force at 250 bar	Drive speed at 2x40l/min
2RTS -120	500/50Q-17.0	2.9 to	4.0 km/h
	500/45Q-22.5	2.5 to	4.7 km/h
2RTX -120	550/45Q-22.5	2.4 to	4.8 km/h
	600/40Q-22.5	2.4 to	4.8 km/h

M Series Technical Data		M14	M16
tyre size		500/50 - 17"	550/45-22.5"
permitted total weight at 10 km/h on non-public roads	[to]	17	19
permitted total weight at 25 km/h implementation	[to]	15	17
permitted total weight at 40 km/h implementation	[to]	14	16
load space	[m²]	2.6	3.0
slew angle of the swing axle	[°]	+/- 12	
undladen weight with standard tyres*	[kg]	2450	2750
suitable for following forestry crane models		FL+FZ from 52 + all Epsilon	

* additional weight: 4TB-2RTS-120: 150 kg • DLB: 50 kg • own oil supply: 150 kg

VARIABILITY

M-SERIES ADJUSTABLE AXLE



FL8010 ON M16 V

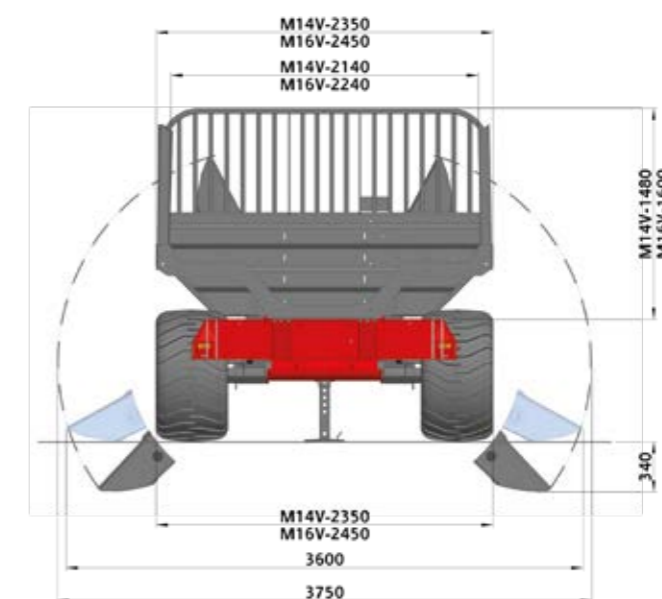
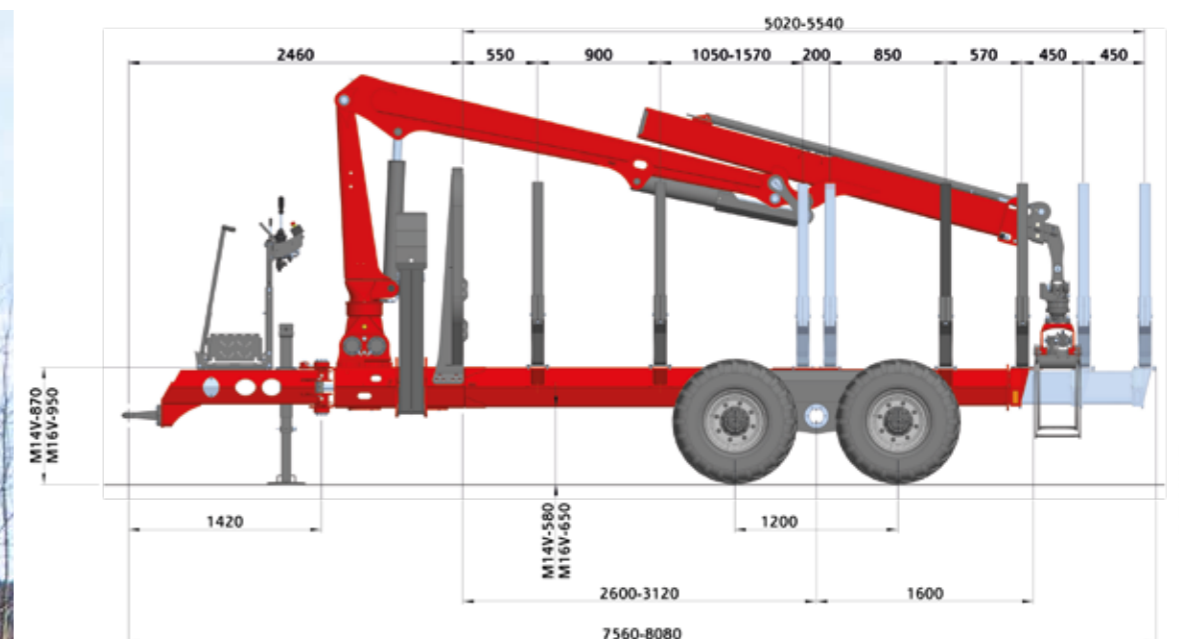
The V version for long timber

The right centre of gravity thanks to hydraulic axle repositioning.

- up to 19t permitted total weight at 10km/h on non public roads
- 520 mm hydraulical repositioning of the axle
- 900 mm mechanical extension
- double stake holder above the axle
- up to 6 stake bunks possible
- also suitable for loads 2 x 3m



double stake bunk above the axle



	Tyre sizes	Drive force at 250 bar	Drive speed at 2x40l/min
2RTS -120	500/50Q-17.0	2.9 to	4.0 km/h
	500/45Q-22.5	2.5 to	4.7 km/h
2RTX -120	550/45Q-22.5	2.4 to	4.8 km/h
	600/40Q-22.5	2.4 to	4.8 km/h

M Series Technical Data		M14 V	M16 V
tyre size		500/50 - 17"	550/45-22.5"
permitted total weight at 10 km/h on non-public roads	[to]	17	19
permitted total weight at 25 km/h implementation	[to]	15	17
permitted total weight at 40 km/h implementation	[to]	14	16
load space	[m ²]	2.6	3.0
slew angle of the swing axle	[°]	+/- 12	
undladen weight with standard tyres*	[kg]	2800	3100
suitable for following forestry crane models		FL+FZ from 52 + all Epsilon	

* additional weight: 4TB-2RTS-120: 150 kg • DLB: 50 kg • own oil supply: 150 kg

FORESTRY CRANE L-CRANE 7.7 & 8.4 M REACH

Now NEW with 7.7
& 8.4m reach



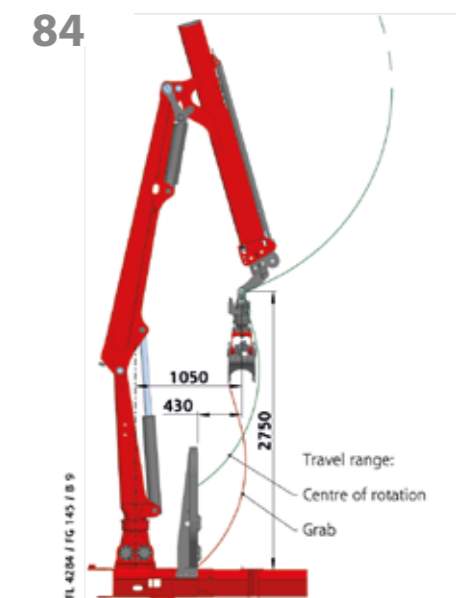
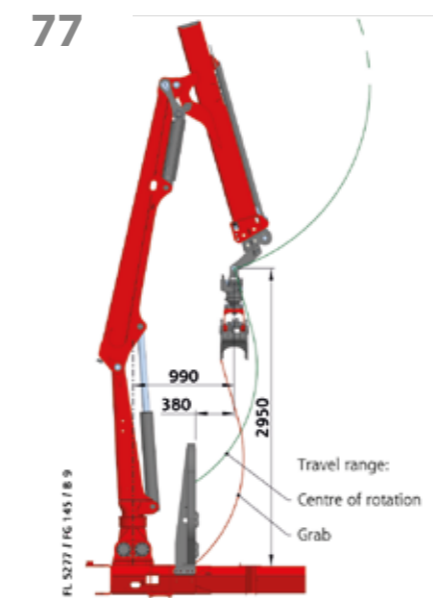
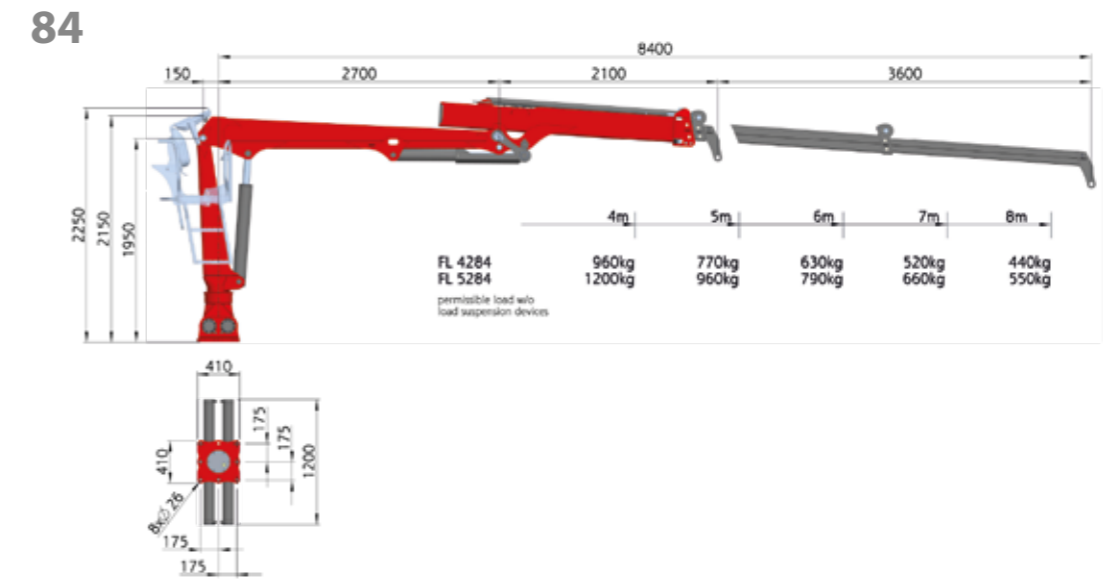
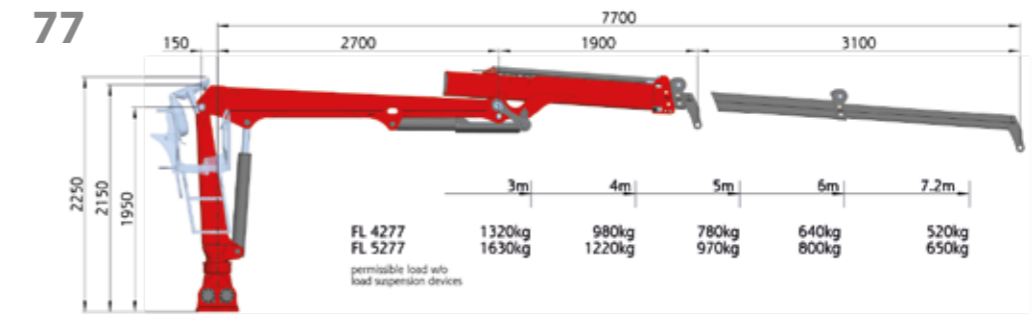
FL4277 on B8

Double telescopic boom with advantages

Compact, nimble and thus stronger.

- with double slewing mechanism and patented EPSLINK
- attached knuckle boom
- 4.5to rotator as standard
- slewing torque of 14kNm or 17kNm
- low dead weight and high lifting capacity

the optimum
working position



FL Technical Data		4277	5277	4284	5284
lifting torque, net	[kNm]	41	52	40	51
slewing torque, net	[kNm]	14	17	14	17
slewing range	[°]	340			
weight with 8-fold slider w/o grabber	[kg]	780	800	830	850
maximum operating pressure	[bar]	190	225	190	225
pump flow rate, recommended	[l/min]	1x45 / 2x30			
recommended timber grabber		FG 145			

FORESTRY CRANE L-CRANE 8.5 & 9.5 M REACH



FL5275 on B9

Now NEWLY available as S version

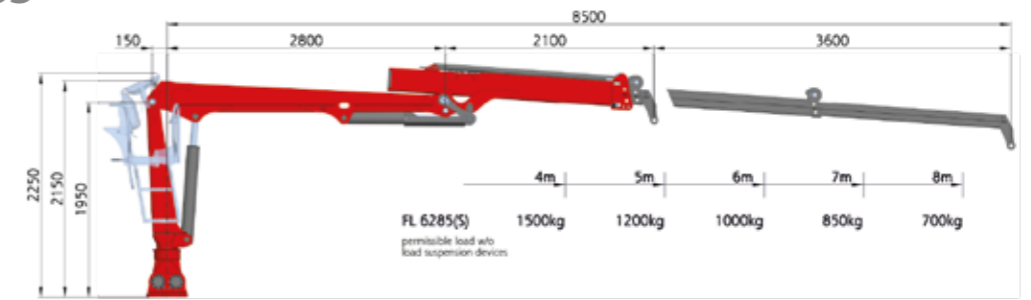
Optionally with the large model's slewing torque.

- large reach with short lay-down length
- protected boom system all the way to the top of the grabber
- optionally with greater slewing torque
- patented EPSLINK universal joint
- 4.5to rotator as standard

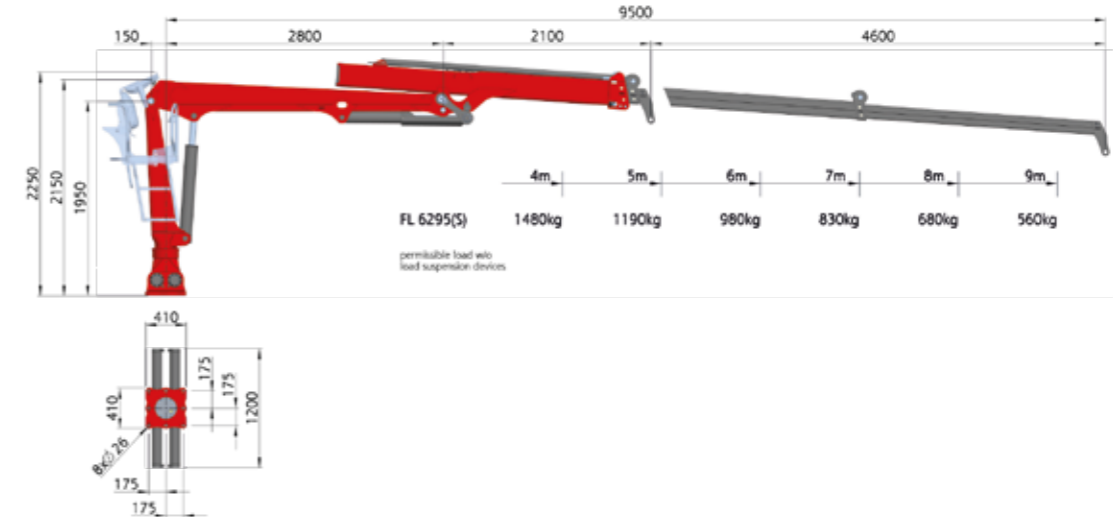
great stability
thanks to flap down



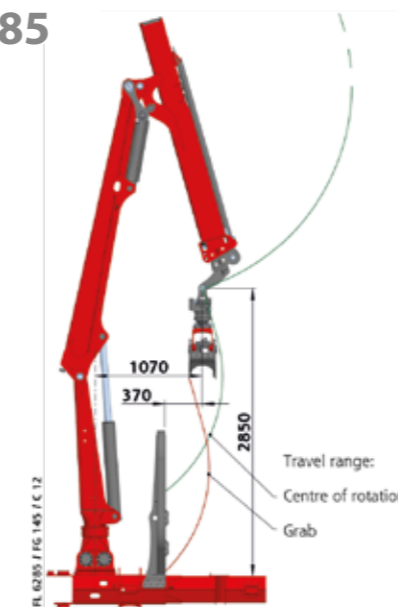
85



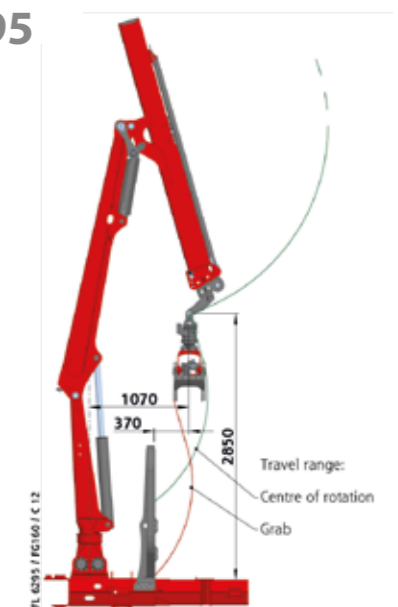
95



85



95



FL Technical Data		6285	6285S	6295	6295S
lifting torque, net	[kNm]	62		61	
slewing torque, net	[kNm]	17	21	17	21
slewing range	[°]	340			
weight with 8-fold slider w/o grabber	[kg]	950	1000	1000	1050
maximum operating pressure	[bar]	220			
pump flow rate, recommended	[l/min]	1x55 / 2x35			
recommended timber grabber		FG 145		FG 160	

FORESTRY CRANE

L-CRANE 9.0 & 10.0 M REACH



FL7290 on M14

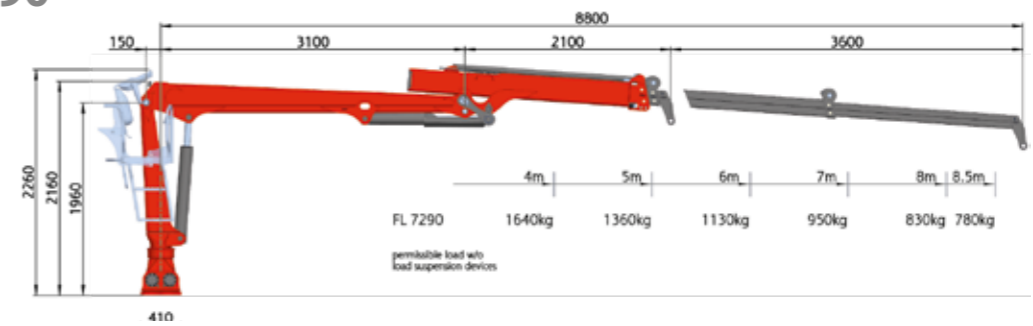
The longest double telescopic boom cranes

Available on all M-class forestry trailers.

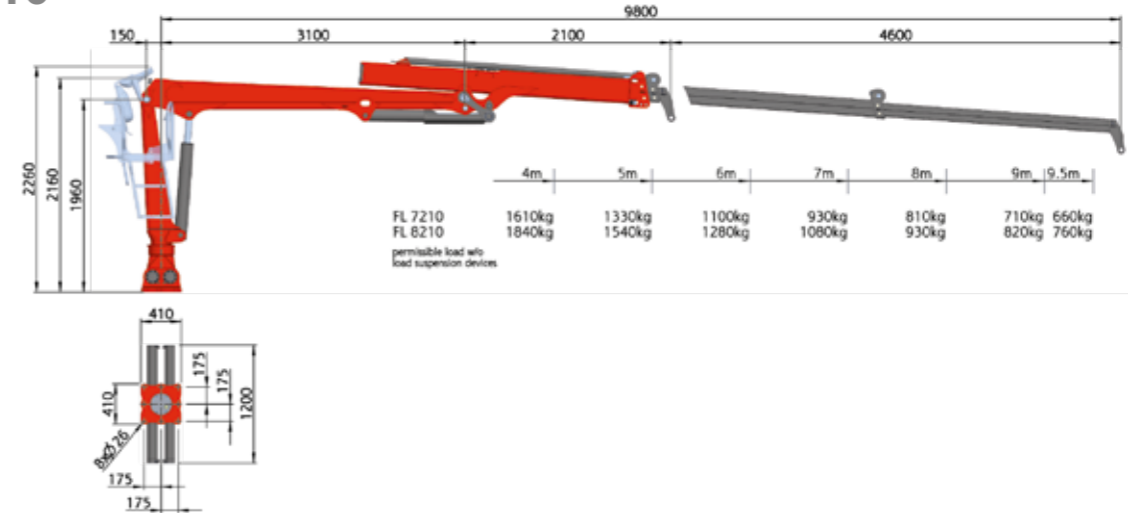
- large reach with short lay-down length
- protected boom system all the way to the top of the grabber
- high slewing torque of 20kNm or 22kNm
- patented EPSLINK universal joint
- optionally with 5.5to rotator

protected
crane light

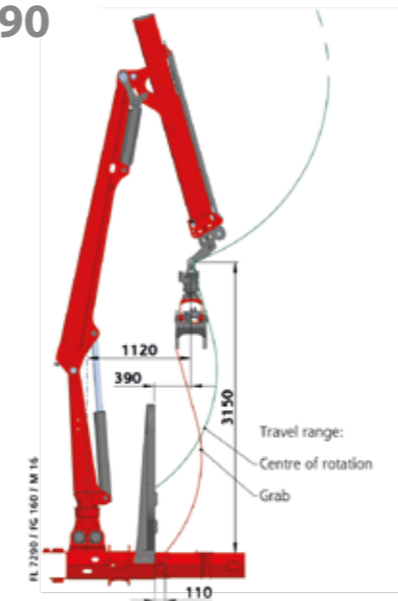
90



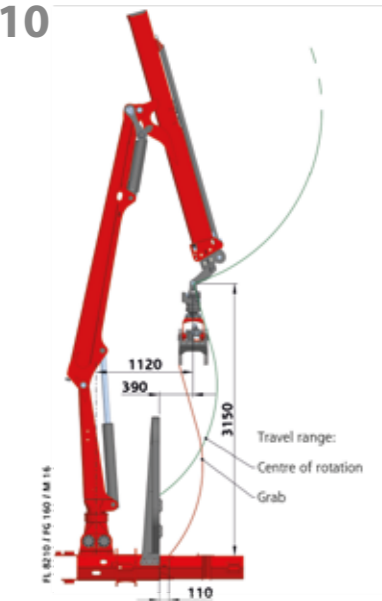
10



90



10



FL Technical Data		7290	7210	8210
lifting torque, net	[kNm]	70	68	78
slewing torque, net	[kNm]	20		22
slewing range	[°]		340	
weight with 8-fold slider w/o grabber	[kg]	1100	1180	1200
maximum operating pressure	[bar]	205		230
pump flow rate, recommended	[l/min]	1x70 / 2x45		
recommended timber grabber		FG 160		

FORESTRY CRANE L-CRANE 11.0 M REACH



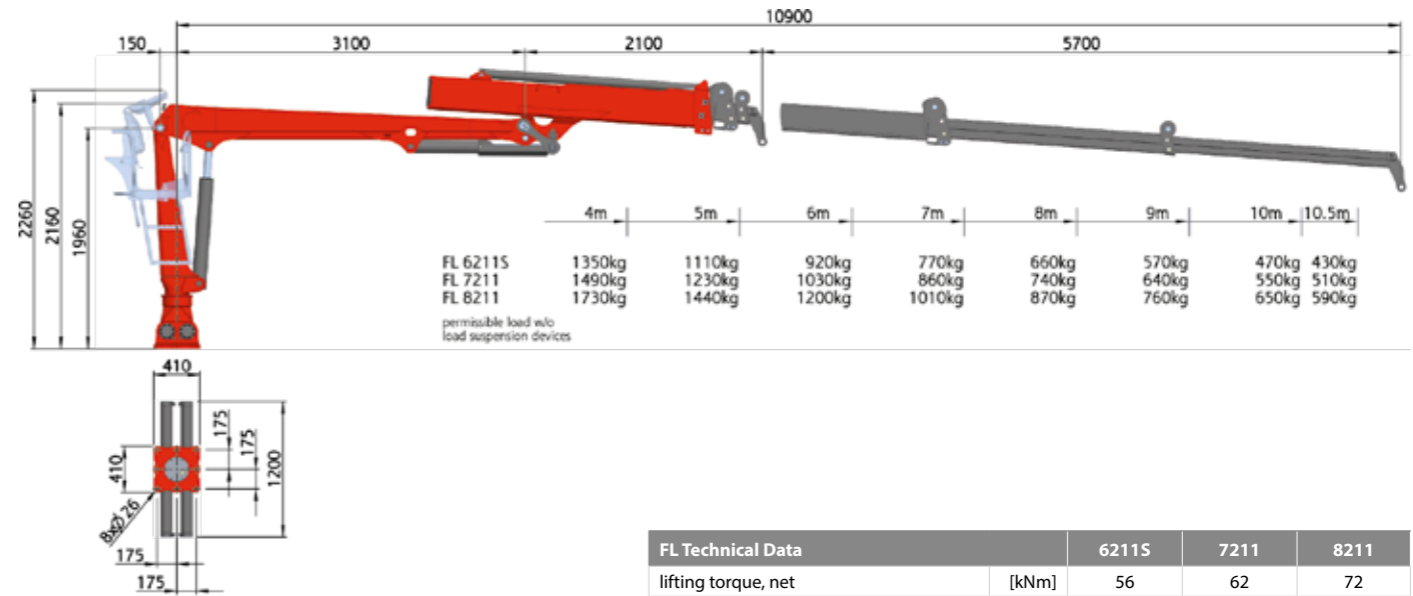
FL8211 on M16

Triple telescopic boom and 11m reach Unique and top-class.

- triple telescopic boom system
- protected boom system all the way to the top of the grabber
- high slewing torque of 20kNm or 22kNm
- patented EPSLINK universal joint
- optionally with 5.5to rotator

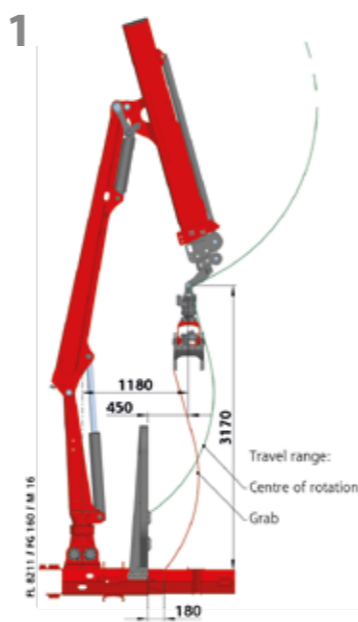
powerful
knuckle boom

11



FL Technical Data		6211S	7211	8211
lifting torque, net	[kNm]	56	62	72
slewing torque, net	[kNm]	22	20	22
slewing range	[°]		340	
weight with 8-fold slider w/o grabber	[kg]	1300	1320	1340
maximum operating pressure	[bar]	230	205	230
pump flow rate, recommended	[l/min]	1x55 / 2x35		1x70 / 2x45
recommended timber grabber		FG 160		

11



Pickroon
bracket



FORESTRY CRANE Z-CRANE 8.0 M REACH



FZ5280 on C10

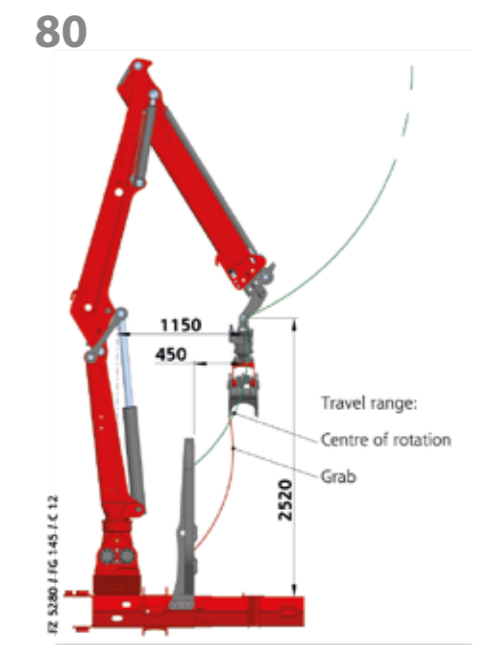
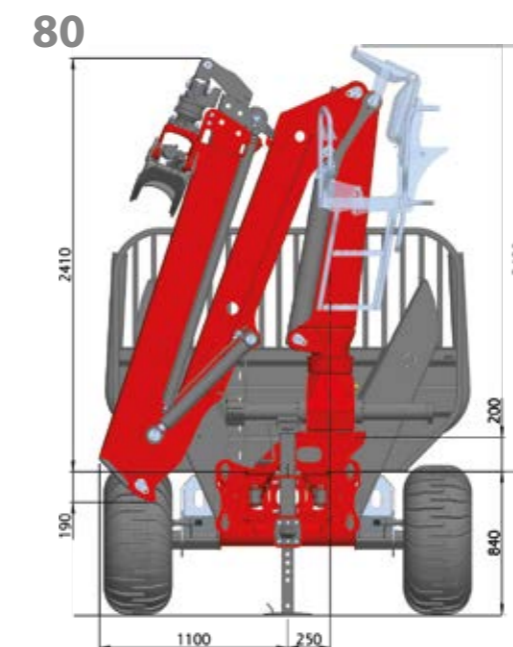
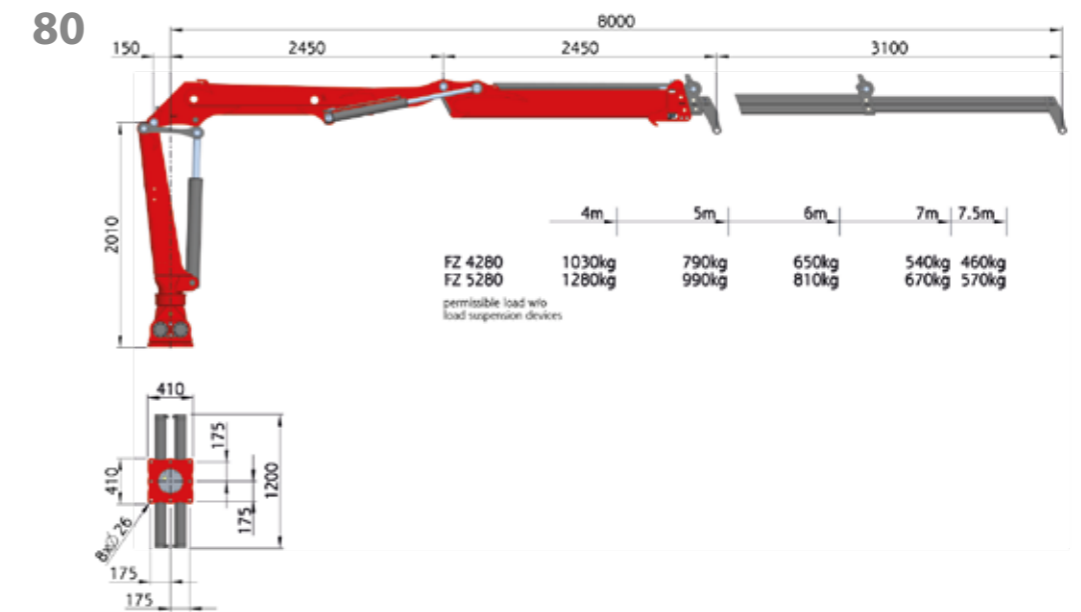
Flexibility thanks to Z-crane

Less loss of lifting power over the stakes thanks to knee lever.

- knee lever between crane column and lifting boom
- low dead weight, high lifting capacity
- high slewing torque of 14kNm or 17kNm
- patented EPSLINK universal joint
- 4.5to rotator as standard



pump and drive shaft - well protected in the drawbar



FZ Technical Data	4280	5280	
lifting torque, net	[kNm]	41	51
slewing torque, net	[kNm]	14	17
slewing range	[°]	340	
weight with 8-fold slider w/o grabber	[kg]	980	1000
maximum operating pressure	[bar]	185	220
pump flow rate, recommended	[l/min]	1x45 / 2x30	
recommended timber grabber		FG 145	

FORESTRY CRANE Z-CRANE 9.0 & 10.0 M REACH

Now NEW with
10.0m reach



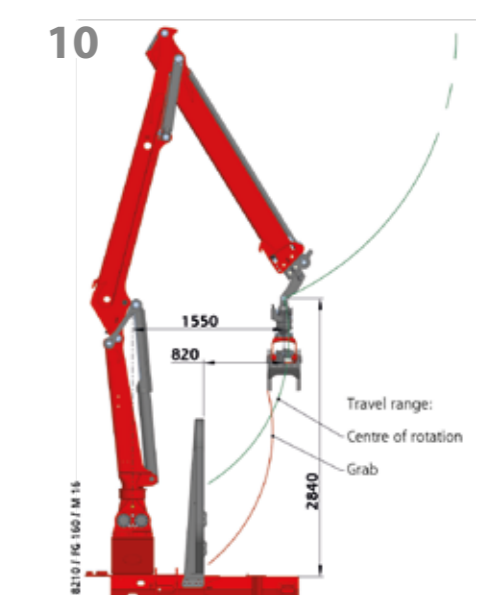
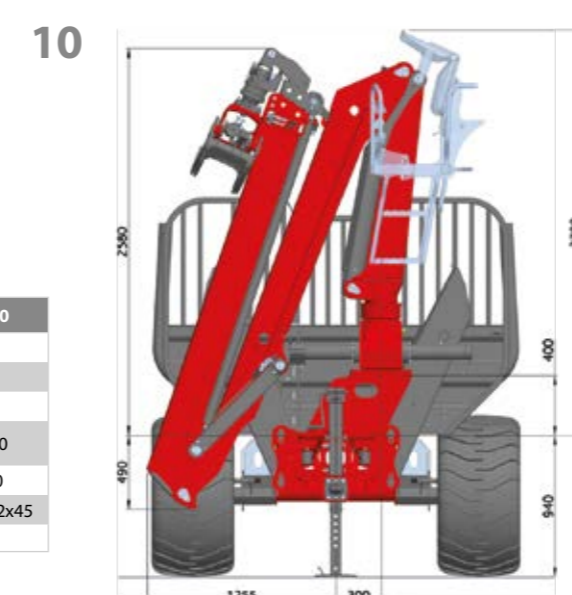
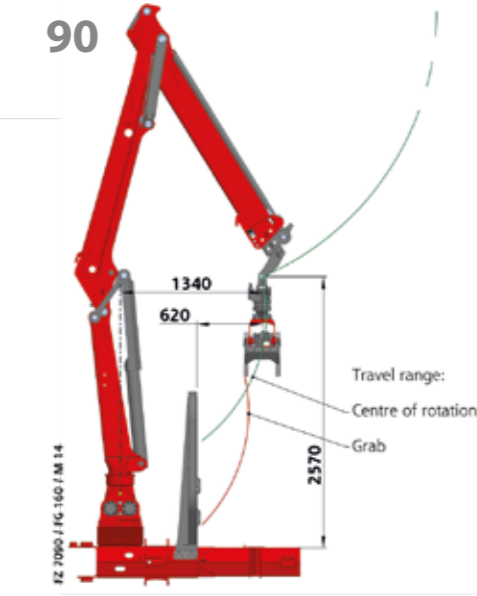
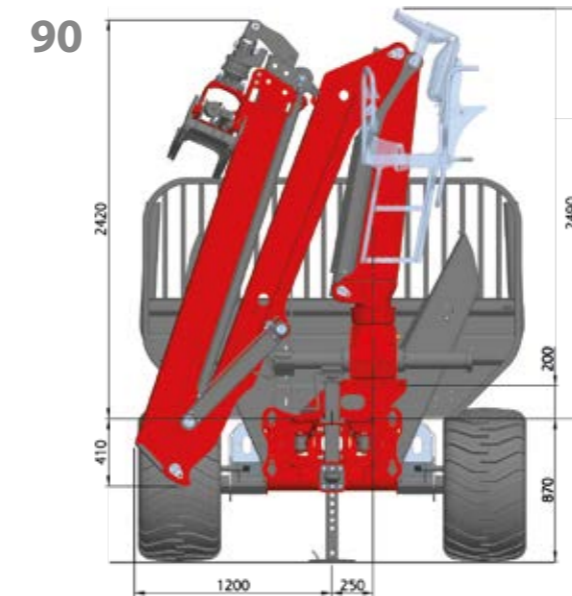
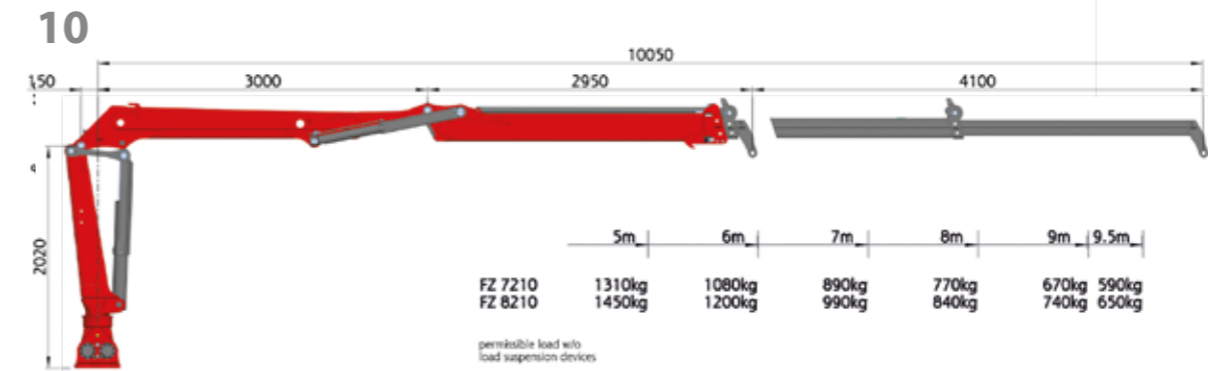
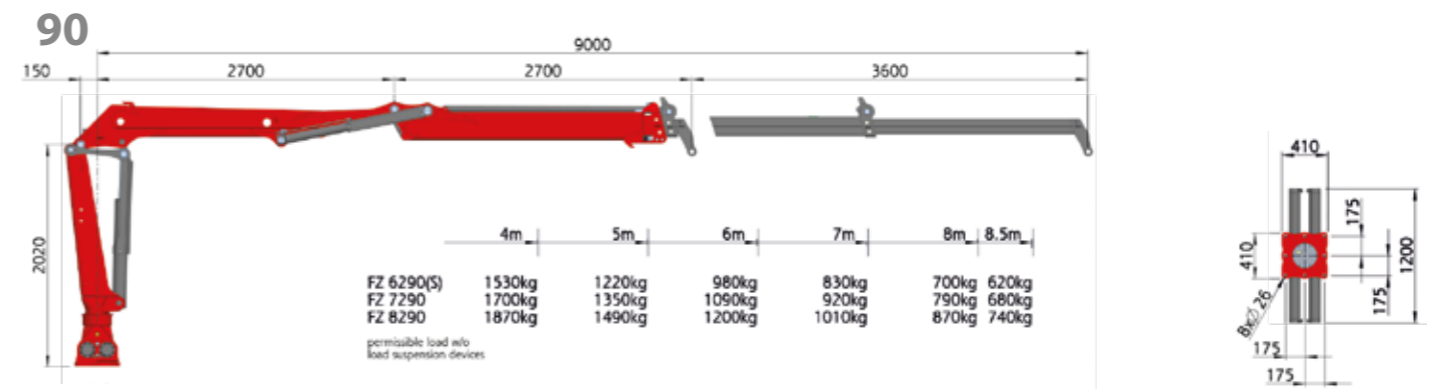
FZ8210 on M16

Now NEW - Z-crane with 10m reach

Somewhat higher and in return also greater crane reach.

- high slewing torque of 17kNm of 23kNm
- knee lever between crane column and lifting boom
- low dead weight, high lifting capacity
- patented EPSLINK universal joint
- 5.5to rotator optionally

FZ Technical Data		6290	6290S	7290	8290	7210	8210
lifting torque, net	[kNm]	61	61	67	75	65	73
slewing torque, net	[kNm]	17	21	23	23	23	23
slewing range	[°]	340					
weight with 8-fold slider w/o grabber	[kg]	1050	1100	1130	1150	1230	1250
maximum operating pressure	[bar]	220	220	240	260	240	260
pump flow rate, recommended	[l/min]	1x55 / 2x40		1x70 / 2x45		1x55 / 2x40	
recommended timber grabber		FG 160					



TRACTOR CRANE

Z-CRANE 8.0 M REACH



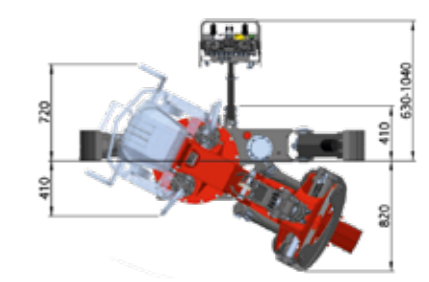
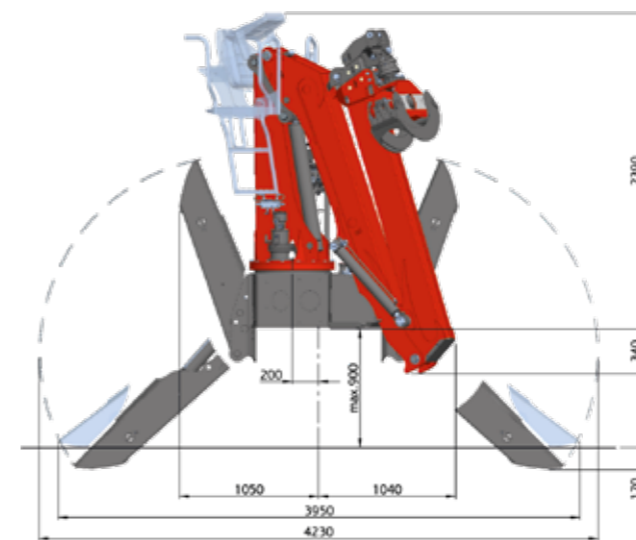
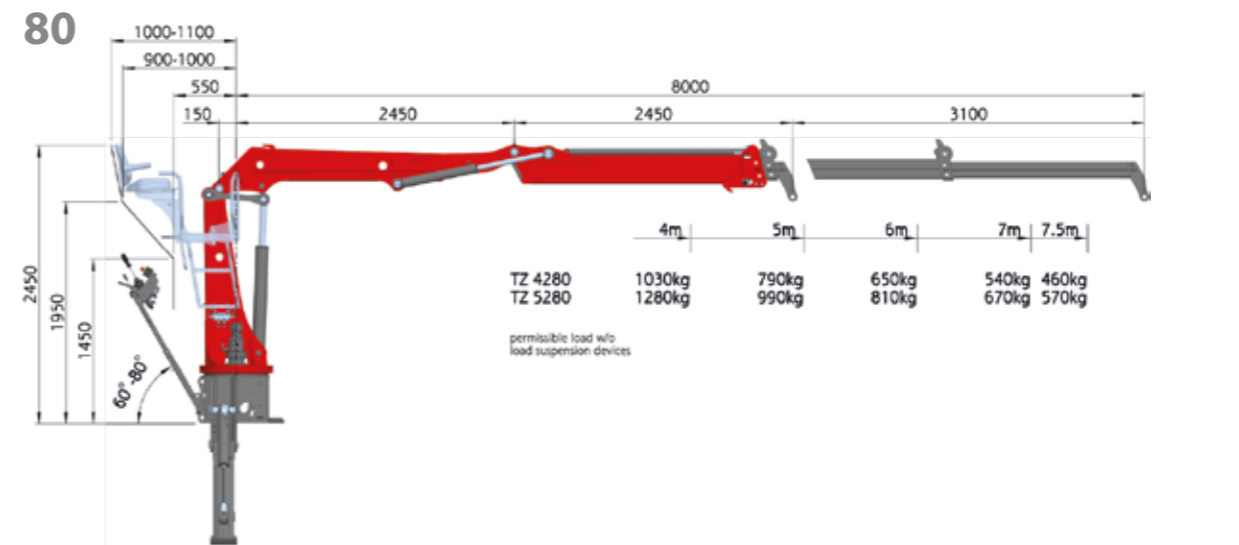
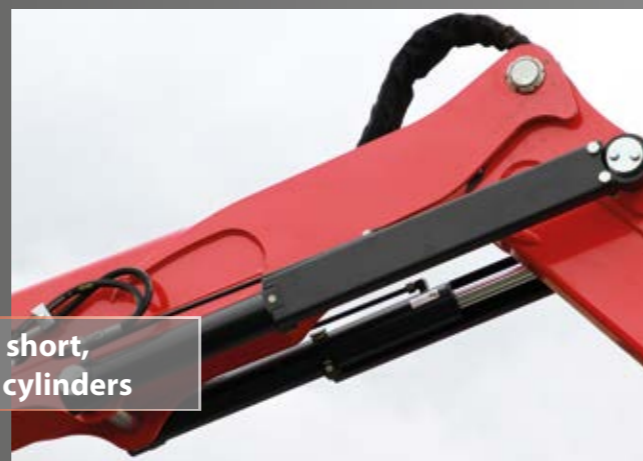
TZ5280

Three-point crane

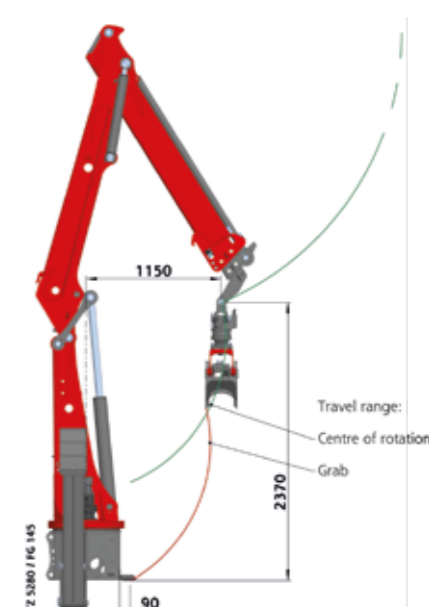
Also ideal for attachments on trailers.

- Can easily be folded up to vehicle width.
- low dead weight, high lifting capacity
- high slewing torque of 16kNm
- patented EPSLINK universal joint
- 4.5to rotator as standard

strong, short,
protected cylinders



TZ Technical Data		4280	5280
lifting torque, net	[kNm]	41	51
slewing torque, net	[kNm]		16
slewing range	[°]		330
weight with 8-fold slider w/o grabber	[kg]	1480	1500
maximum operation pressure	[bar]	185	220
pump flow rate, recommended	[l/min]	1x45 / 2x30	
recommended timber grabber		FG 145	
recommended net tractor weight		3800	4000



TRACTOR CRANE

Z-CRANE 9.0 M REACH



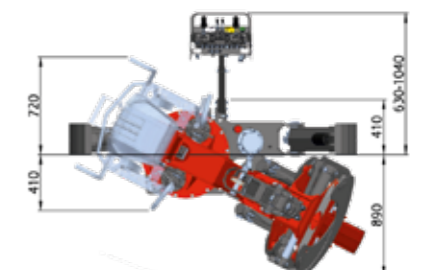
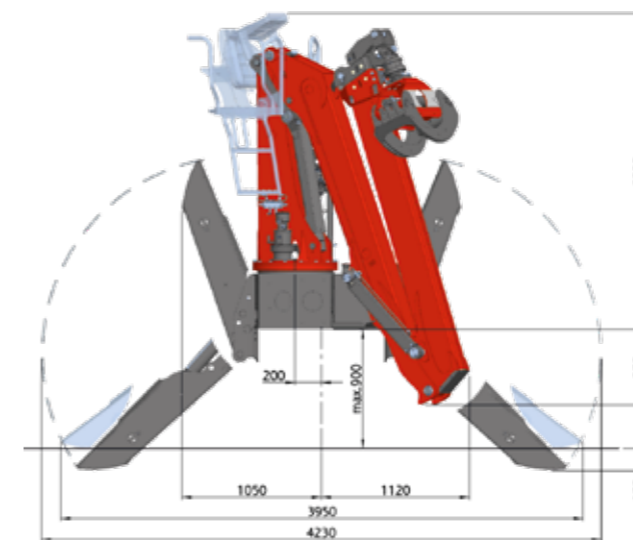
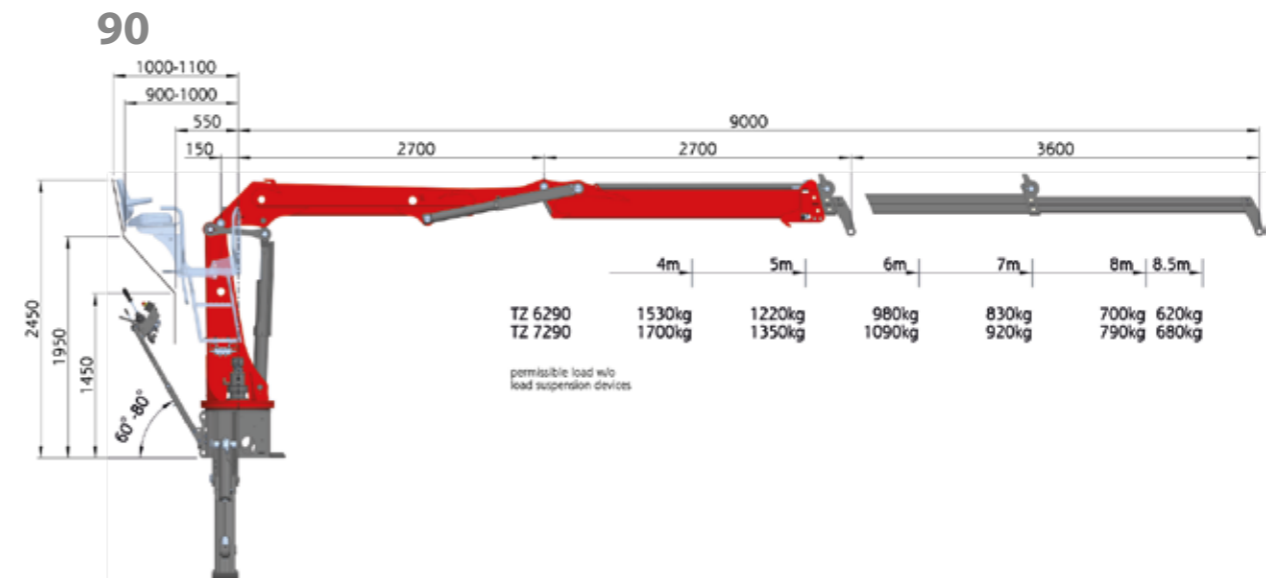
TZ6290

The large three-point cranes

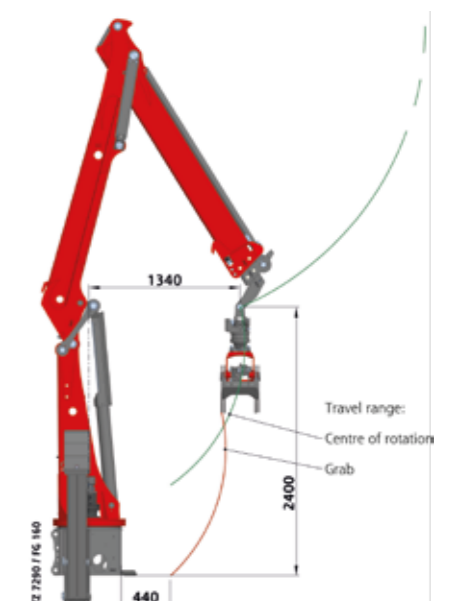
With a reach of 9.0m.

- Can easily be folded up to vehicle width.
- low dead weight, high lifting capacity
- high slewing torque of 16kNm
- patented EPSLINK universal joint
- 4.5to rotator as standard

Grabber with max.
1.80m opening width



TZ Technical Data		6290	7290
lifting torque, net	[kNm]	61	68
slewing torque, net	[kNm]	16	
slewing range	[°]	330	
weight with 8-fold slider w/o grabber	[kg]	1600	1620
maximum operating pressure	[bar]	220	240
pum flow rate, recommended	[l/min]	1x55 / 2x40	
recommended timber grabber		FG 160	FG 160S
recommended net tractor weight		4500	5500



PALFINGER EPSILON C-CLASS AT STEPA



C80Z89 on M16

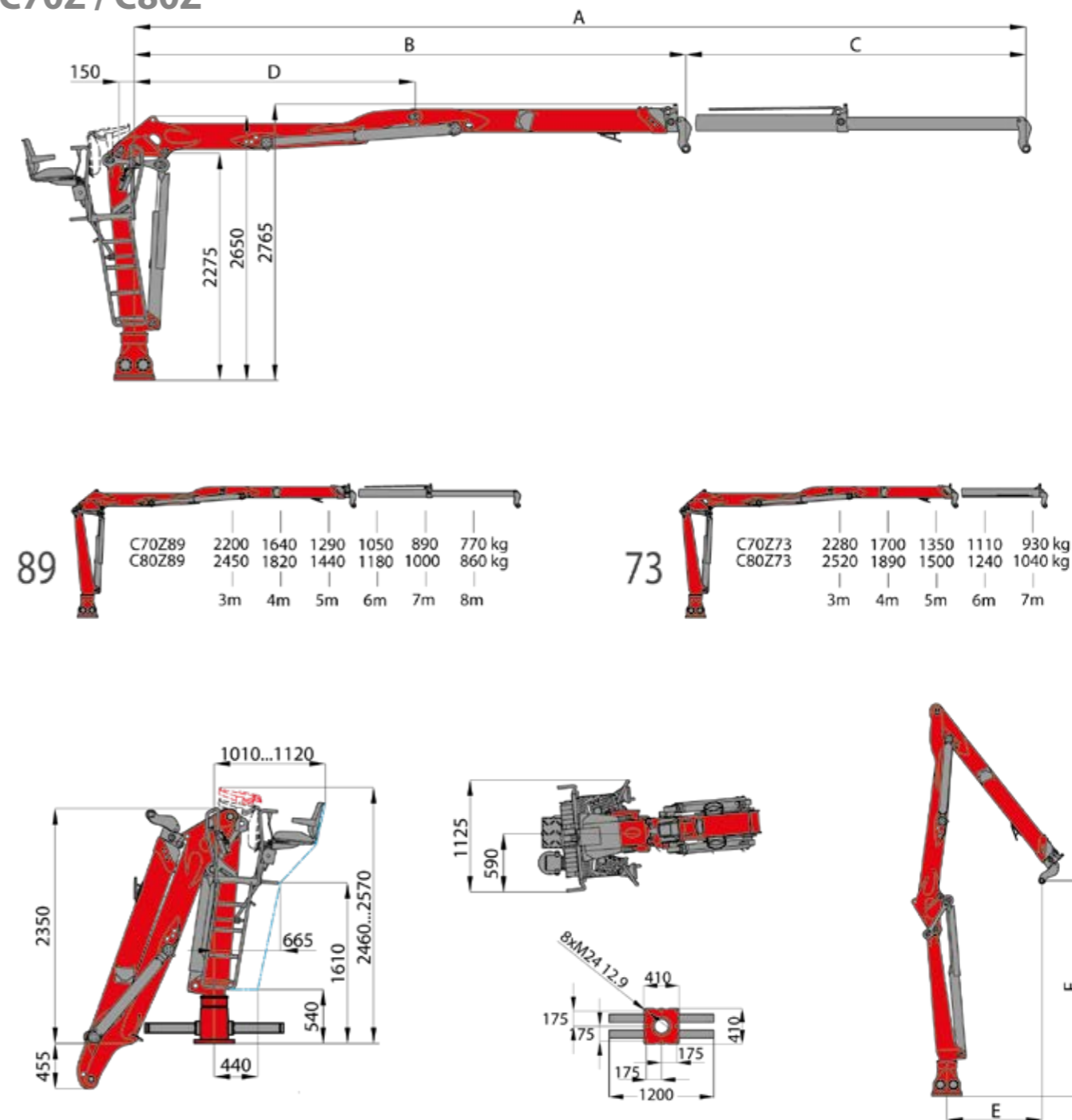
The professional crane with STEPA

A good combination for high demands.

- exclusive combination of EPSILON & STEPA
- available as Z-crane or L-crane
- solid EPSILON grabber
- now NEW available with joystick / wireless remote control combination

professional stakes
as standard on M series

C70Z / C80Z

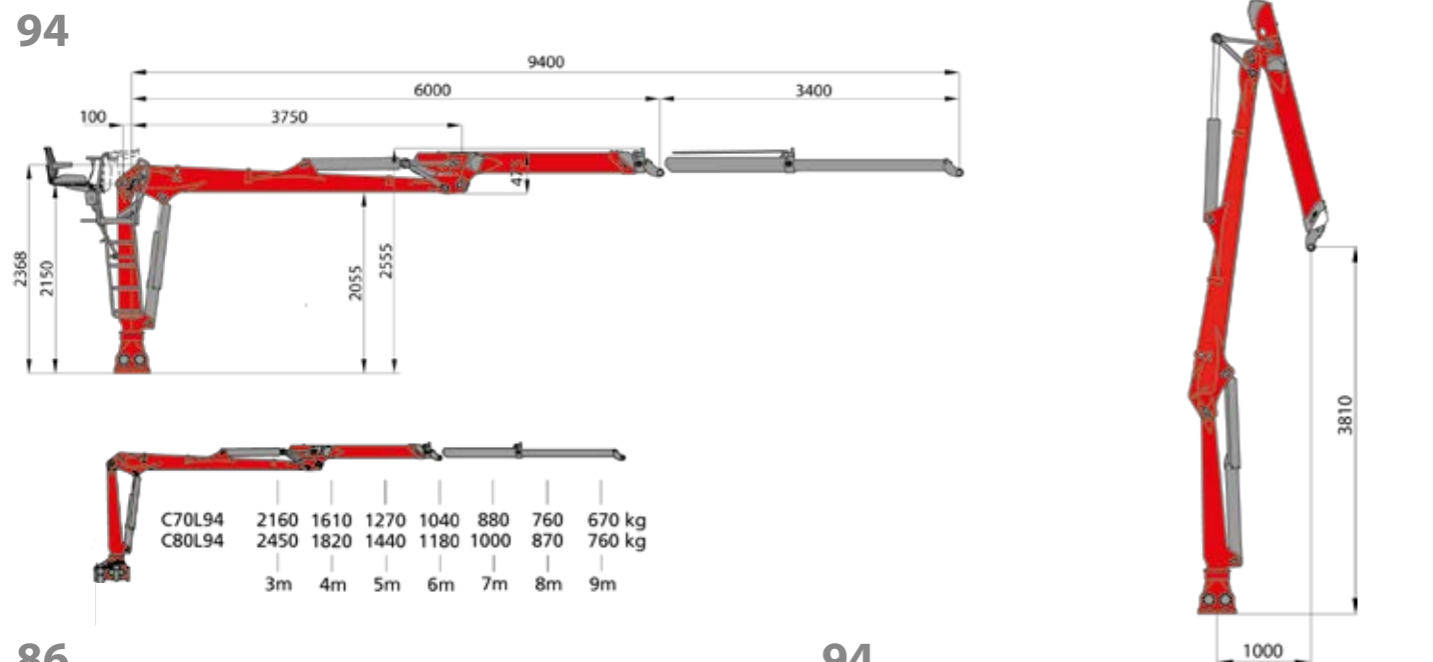
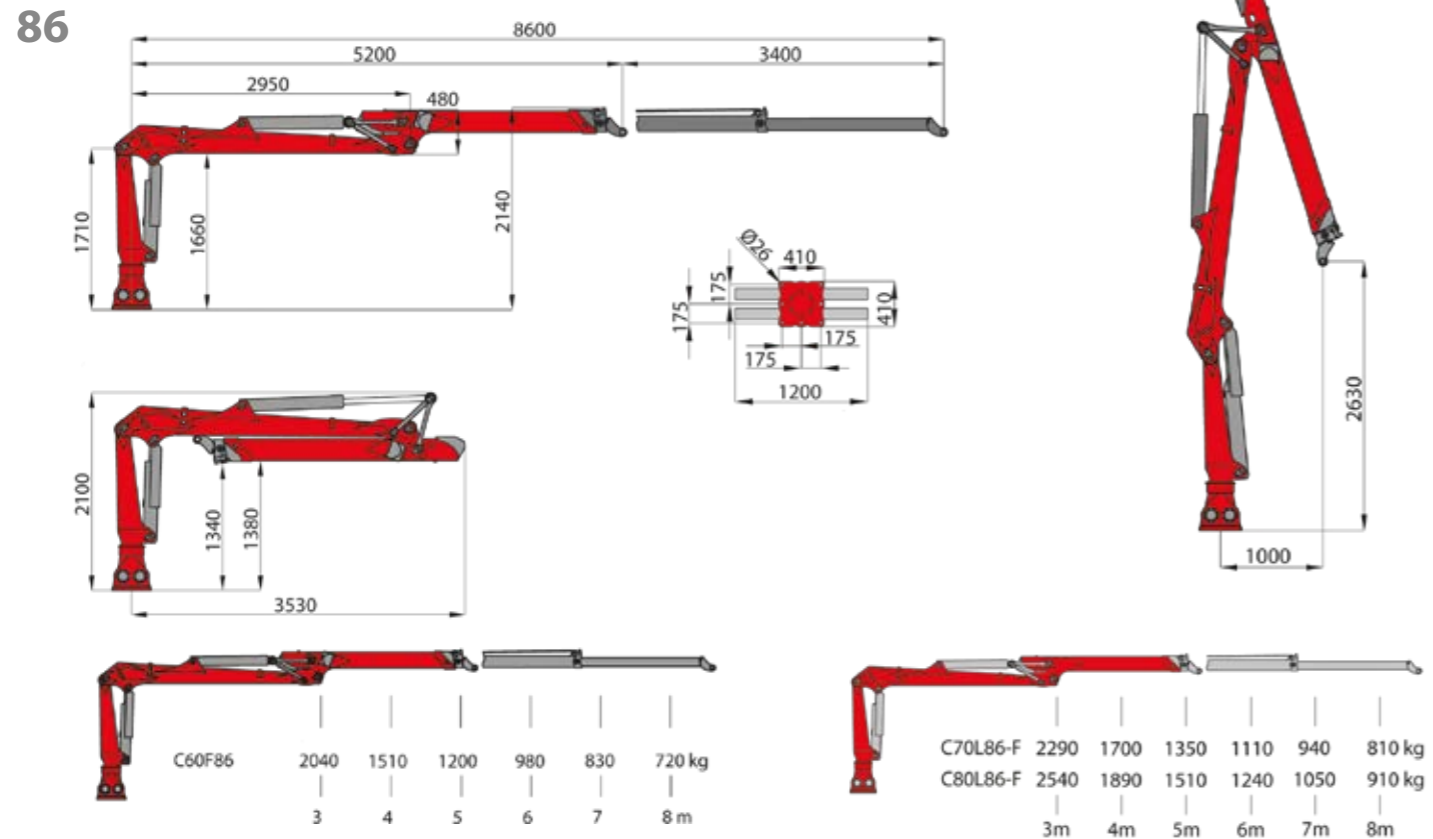


	89	73
A	8915	7250
B	5515	5400
C	3400	1850
D	2810	2810
E	1300	1230
F	2940	3030

CZ Technical Data		C70Z73	C70Z89	C80Z73	C80Z89
lifting torque, net	[kNm]	68	66	76	74
slewing torque, net	[kNm]	18		20	
slewing range	[°]	335			
weight with 8-fold slider w/o grabber	[kg]	1540	1620	1560	1640
maximum operating pressure	[bar]	220		240	
pump flow rate, recommended	1K [l/min]	1x 70			
	2K [l/min]	2x 45			
recommended timber grabber		FG 27			

PALFINGER EPSILON C-CLASS AT STEPA

C60F / C70F / C80F



86

CF 86 Technical Data	C60F86	C70F86	C80F86	
lifting torque, net	[kNm]	61	71	81
slewing torque, net	[kNm]	19	20	20
slewing range	[°]		340	
weight w/o pin-joint / rotator	[kg]	1140	1160	1180
maximum operating pressure	[bar]	200	220	240
pump flow rate, recommended	1K [l/min]	1 x 70	1 x 80	
	2K [l/min]	2 x 45		
recommended timber grabber		FG 27		

94

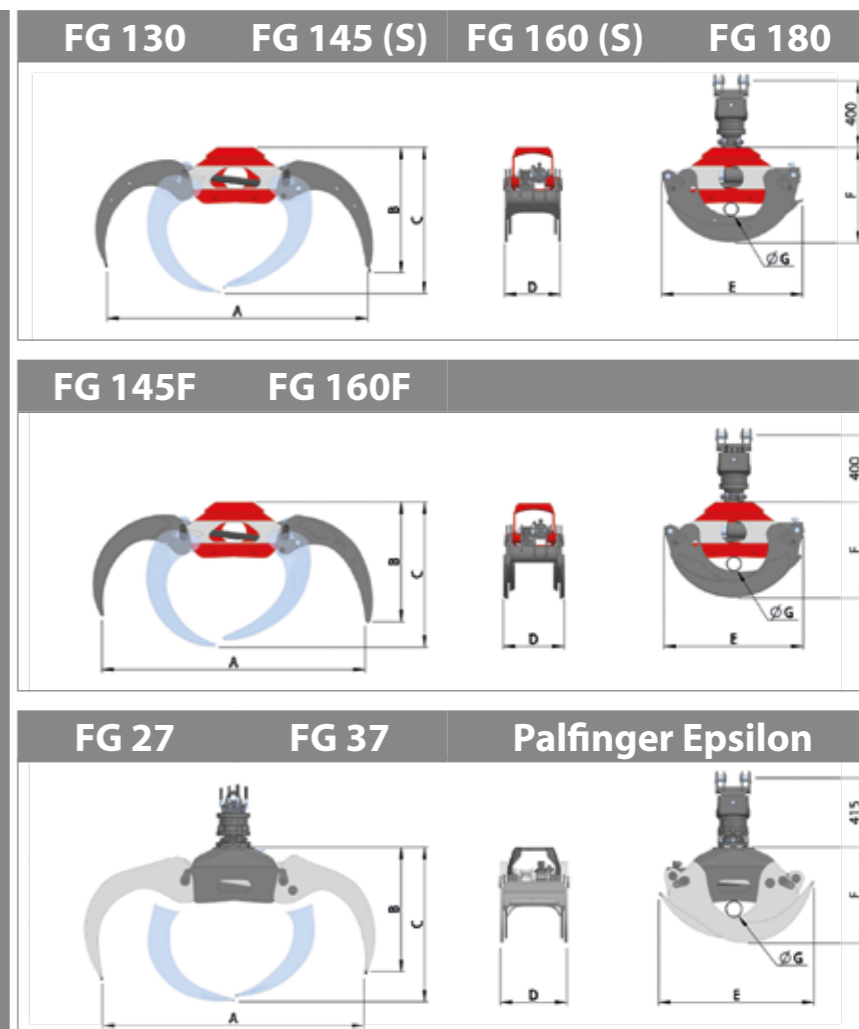
CF 94 Technical Data	C70F94	C80F94	
lifting torque, net	[kNm]	65	74
slewing torque, net	[kNm]	18	20
slewing range	[°]	340	
weight w/o pin-joint / rotator	[kg]	1260	1280
maximum operating pressure	[bar]	200	220
pump flow rate, recommended	1K [l/min]	1 x 70	
	2K [l/min]	2 x 45	
recommended timber grabber		FG 27	

GRABBERS FOR REALLY GETTING TO GRIPS

STEPA offers a multitude of timber grabber types for forestry management use.

Beginning with an opening width of 1.33m and going all the way up to 1.80m. For some grabber types there are also strengthened versions and finger grabbers.

TIP: STEPA timber grabbers have a high closing force. So that the tree trunks and branches cannot easily slip out.



Type	A	B	C	D	E	F	G
	[mm]						
FG 130	1330	685	795	266	755	525	80
FG 145	1450	695	815	266	760	510	90
FG 145F	1450	670	800	296	760	510	90
FG 145S	1450	695	815	270	760	510	90
FG 160	1600	770	905	336	865	555	110
FG 160F	1600	730	890	366	835	555	110
FG 160S	1600	770	905	342	865	555	110
FG 180	1800	670	930	342	885	570	105
FG 27	1480	760	860	440	820	540	100
FG 37	1570	800	920	440	930	570	100



Grabber	FG130	FG145	FG145F	FG145S	FG160	FG160F	FG160S	FG180	FG 27	FG 37
cross-section	[m²]	0,22	0,25	0,25	0,30	0,30	0,30	0,32	0,26	0,36
closing force at 200 bar	[kN]	8,6	9,9	9,9	12,7	12,7	12,7	11,8	14,1	13,1
weight	[kg]	95	100	125	105	130	160	145	170	180
maximum load	[kg]	2500	2500	2500	2500	3000	3000	3000	4000	4000

Rotator	GR 463	GR 55	GV6-RF	Legend	
slewing range	endless	endless	endless	FG	forestry grabber
swing torque at 200 bar	[kNm]	0,9	1,05	NUMBER STEPA	opening width
weight	[kg]	30	35	NUMBER EPSILON	cross-section
maximum load	[kg]	4500	5500	F	finger grabber
		series	optional	S	for heavy use

LOG SPLITTERS QUICK & SAFE

The combination of grab and log splitter is the ideal solution for splitting knotty and gnarled trunks.

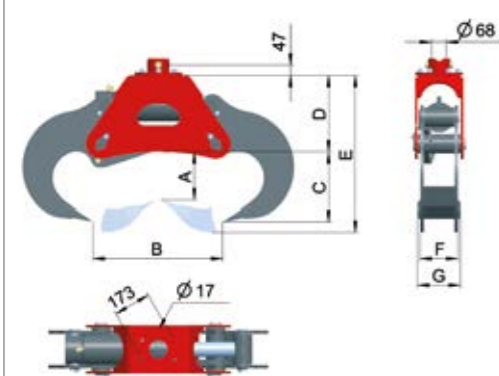
The log splitter is fed using the crane. After it has been split the timber can be sorted, stacked or immediately loaded.

TIP: Visit our YouTube channel and see for yourself how quickly the work is done using our two-grab system.



Log splitter SPZ		20	24
splitting force at	190 bar	15.5 to	18.5 to
	220 bar	18.0 to	21.5 to
	250 bar	20.0 to	24.5 to
press force at	190 bar	336.0 kN	431.5 kN
	220 bar	389.5 kN	499.5 kN
	250 bar	442.0 kN	567.5 kN
recommended power density	[l/min]	50	60
maximum operating pressure	[bar]	250	
dead weight	[kg]	300	400

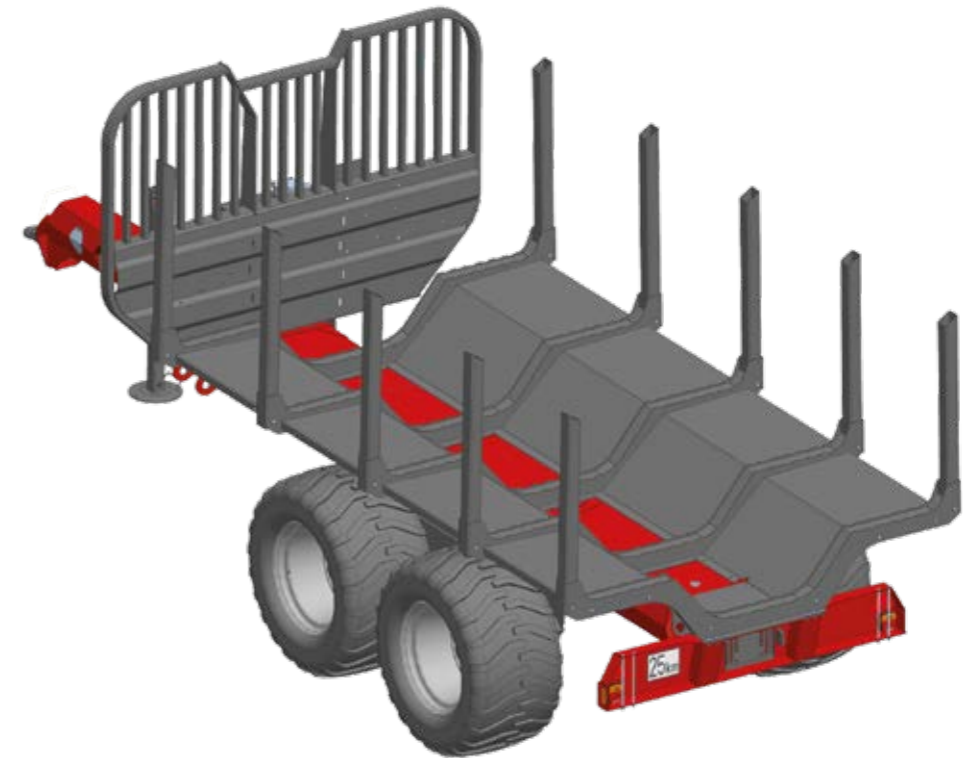
SPZ 20



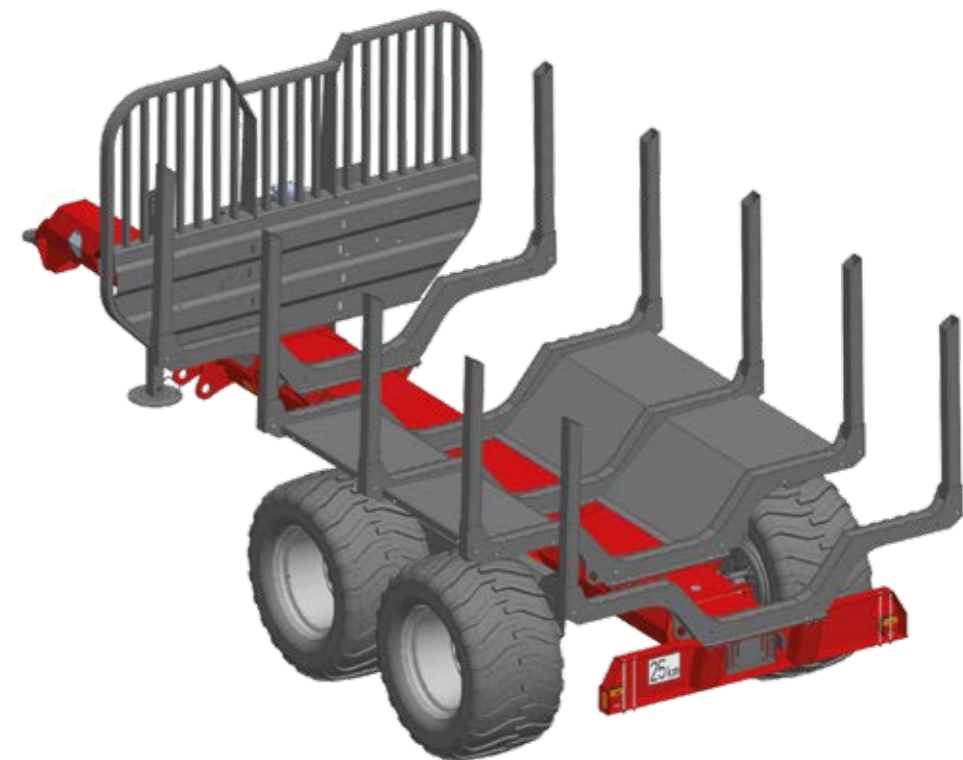
Type	SPZ 20	SPZ 24
A	315	420
B	800	950
C	410	490
D	395	435
E	865	1015
F	215	240
G	240	265



SAFETY AND EASE OF USE FOR DRIVER AND MACHINE

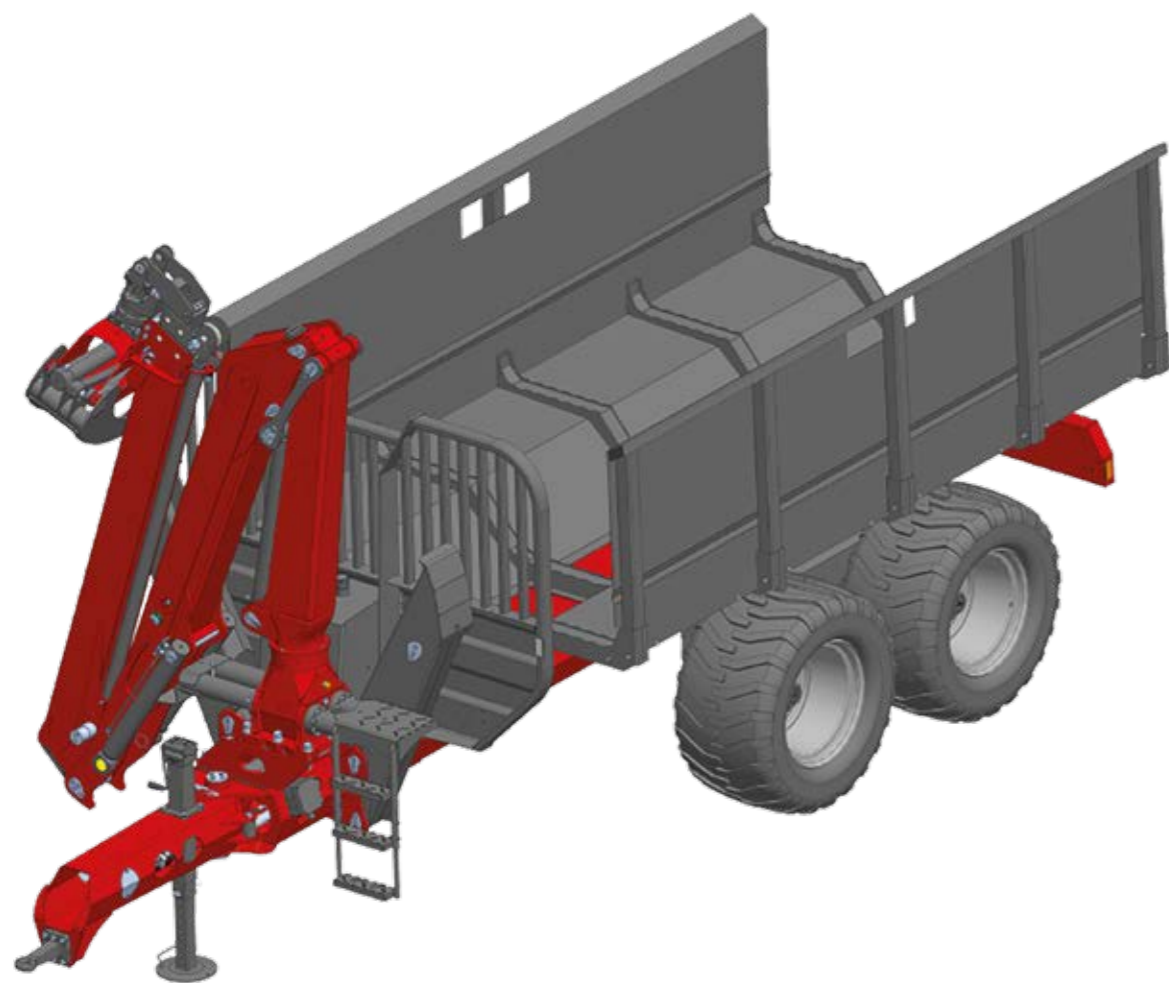


Floor tray for forwarder stakes
optionally available for C and M Series (not for V version)

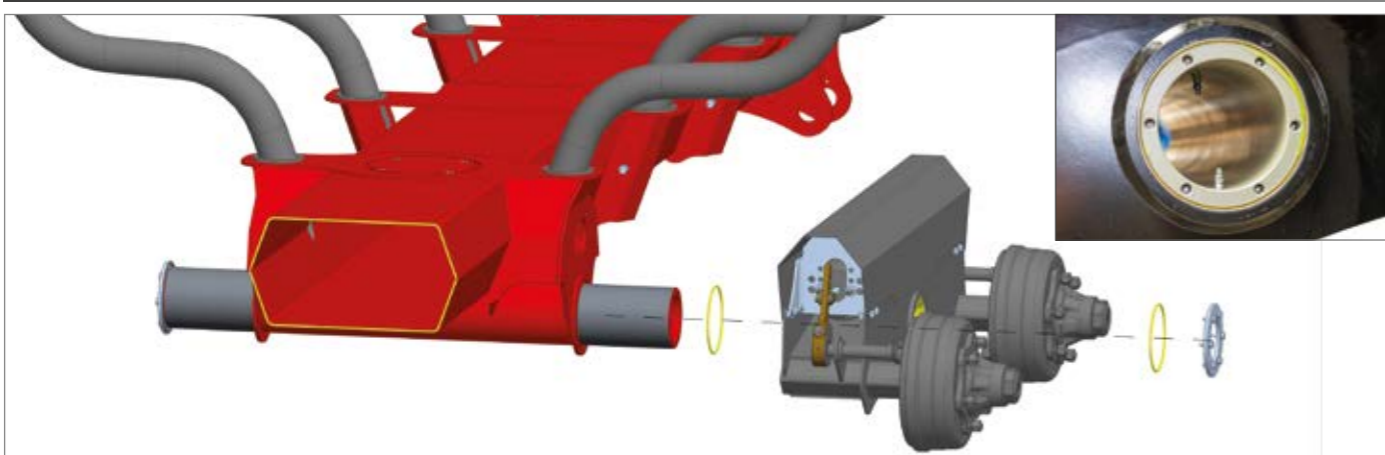


Wheel guard with short floor tray in 2 or 4 parts
optionally available for C and M Series (not for V version)

SAFETY AND EASE OF USE FOR DRIVER AND MACHINE



Branch skip for forwarder stakes
optionally available for C and M Series (not for V version)



Hexagonal frame and sealed bearing points
Sealed bearing points on the bogie axle and the slewing drawbar ensure even greater ease of use. Two lubricating nipples at the points put under greatest strain increase the bearing points' life.

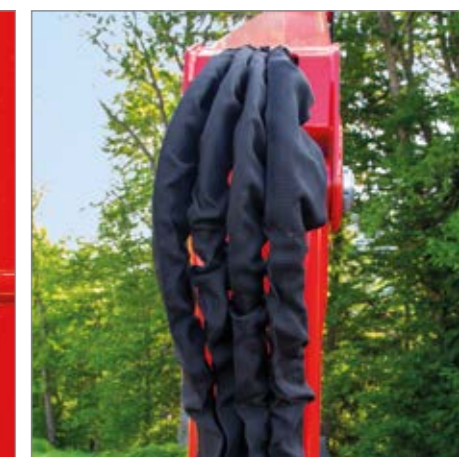
SAFETY AND EASE OF USE FOR DRIVER AND MACHINE



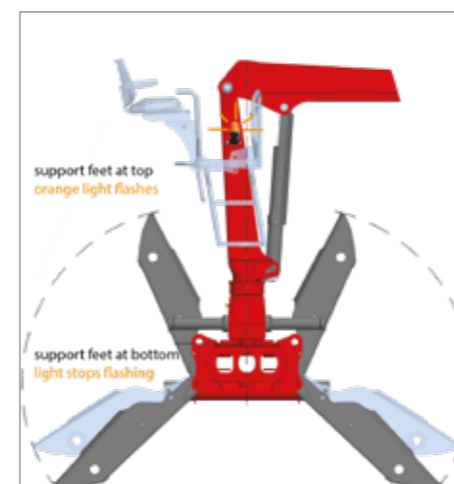
EMERGENCY STOP mechanism
always within reach



Operating signs
always in view



Protected and covered hose runs



Stabilisation reminder system
for more safety



Knuckle cylinder protection
on Z- and L-crane



Chain saw bracket
cannister bracket



Immobilisation brake with
hydraulic 25 km/h brake system



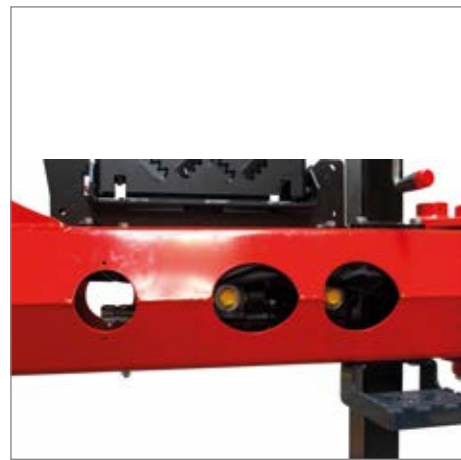
Digital operating hours counter



Vibration meter
optional

EQUIPMENT

PATENTED SLEWING DRAWBAR



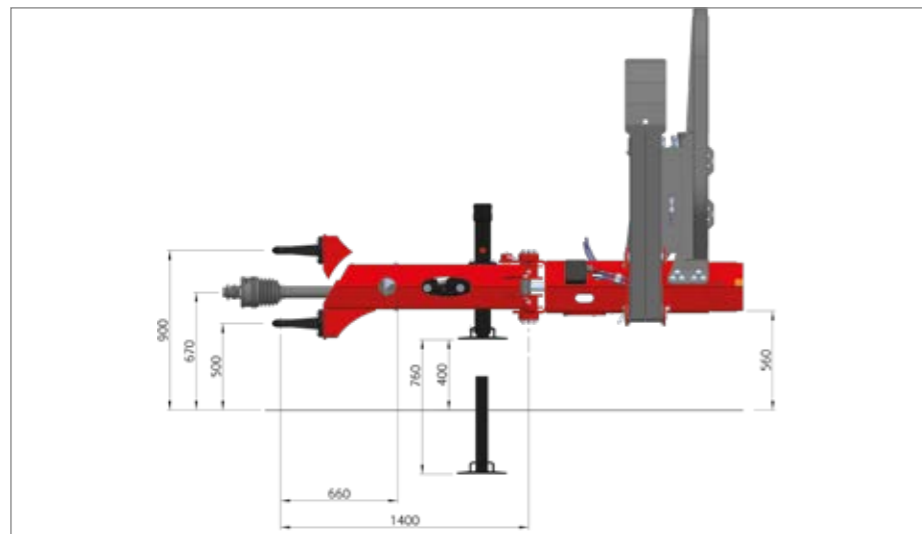
Pump well protected in the drawbar



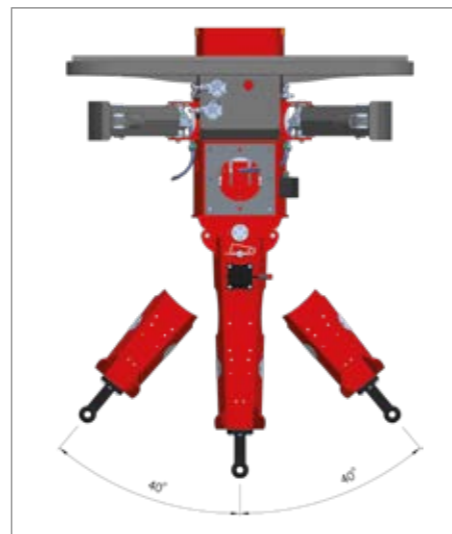
Two-stage hand crank jack



Hydraulic jack



Top and bottom hitch can also be retrospectively rotated



+/- 40 degrees slewing range



Joystick control times TWO

Easily and flexibly - With the new fully electric joystick control system the forestry crane can be operated from the top seat or driver's cab.

EQUIPMENT

CONTROL MODES



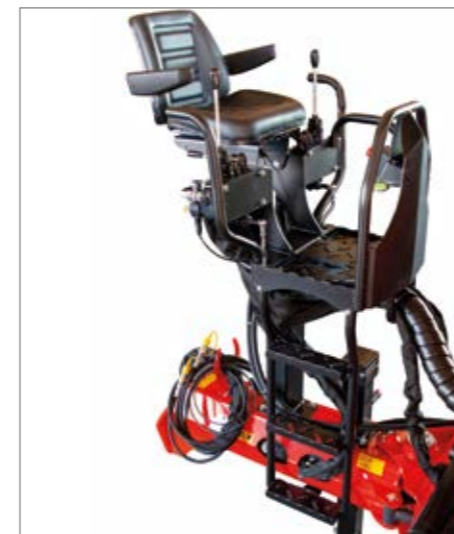
Standard ON-OFF one or two-circuit control system



Rotary level two-circuit control system



Joystick hydraulic/electric two-circuit control system



Drawbar seat two-circuit control system



Top seat two-circuit control system



Radio remote control Joystick top seat



Safe access up to the standing platform



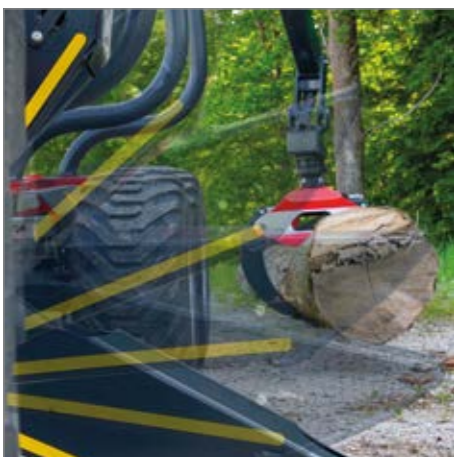
Top seat with electric additional function



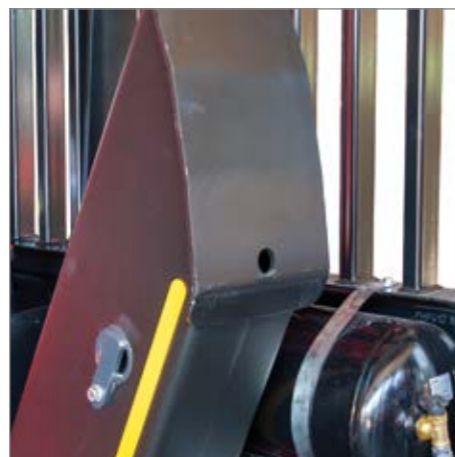
Plug-in couplings for an add-on function

EQUIPMENT

STABLE & PROTECTED



Flap down
minimal space needed



Large contact area
optimum ground adaption



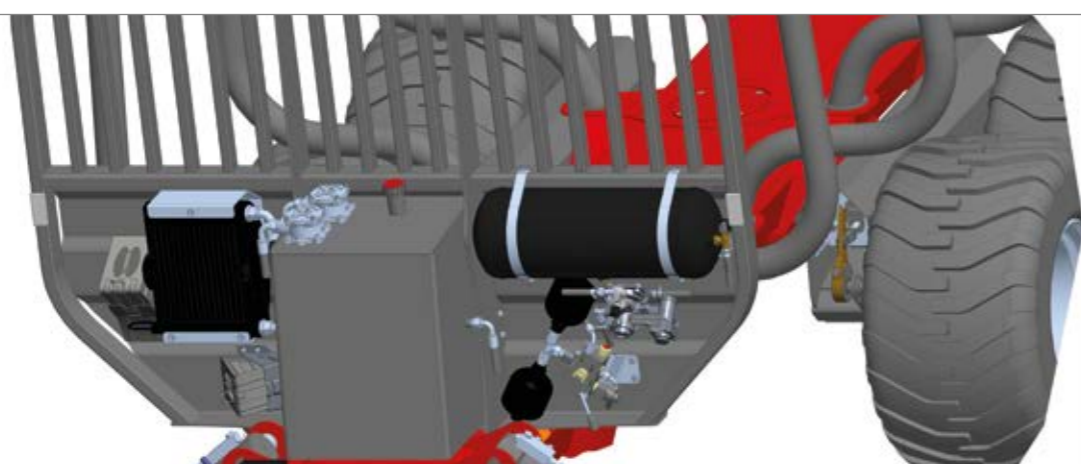
Pendulum brake
single-acting

4-wheel braking
as standard



Brake system & auxiliary drive

A hydraulic, pneumatic or combined brake system can be supplied, as required. The use of a hydraulic auxiliary drive system from Black Bruin makes it possible to master even difficult stretches of terrain. At STEPA every auxiliary drive is equipped with an automatic safety shut-off function.



Front grille providing top protection

The brake system, oil cooler and chocks are easily accessible, yet very well protected.

EQUIPMENT

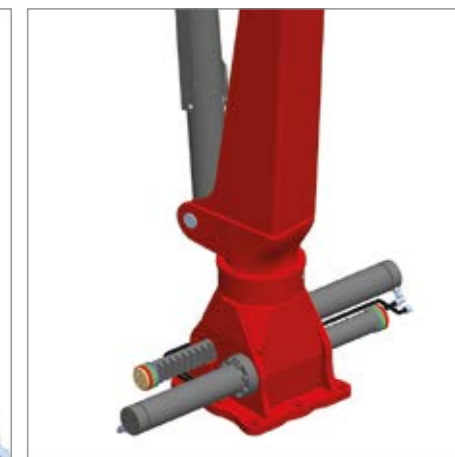
STEPA HIGHLIGHTS



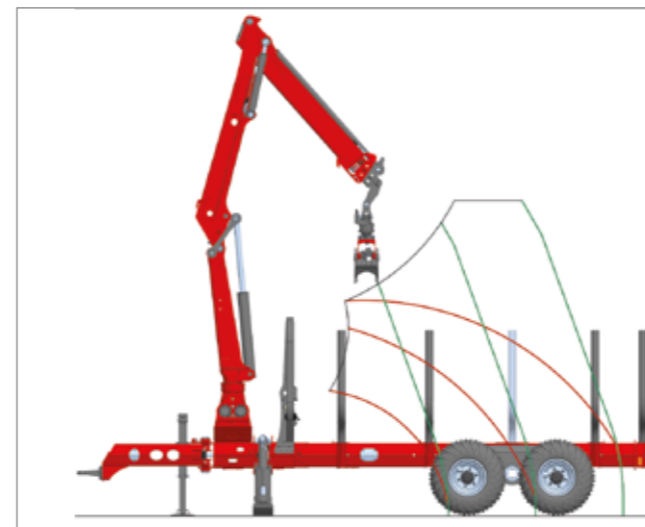
Logging winch (optional)
7mm-thick and 40m-long cable with tensile force of 1.5 t



Ball slewing ring
Tractor cranes have a crane column with a hardened ball rim bearing and slew transmission inclusive of brake.



Double slewing system
Double slewing system in an oil bath, two robust round gear racks & end position damping



Enormous lifting power

The linkage lever between crane column and lifting boom enables the STEPA Z-crane to lift up to 60 percent more in the upper working positions, over the stakes and at close quarters than a forestry crane without a linkage lever.



Silo bale attachment

opening width with SBAR for timber grabber
FG 160 = 1360 mm or FG 180 = 1560 mm



Ideal for transporting
straw and silo bales

THE PERFECT PARTNER FOR FORESTRY MANAGEMENT



STEPA Farmkran GmbH
Christophorusstraße 28
5061 Elsbethen / AUSTRIA
T +43 662 / 636 404-0
F + 43 662 / 636 404-3
E office@stepakran.com

Follow us



ST45 / 0225_EN

Your STEPA Partner: